

# Formal Analysis and Computer Process

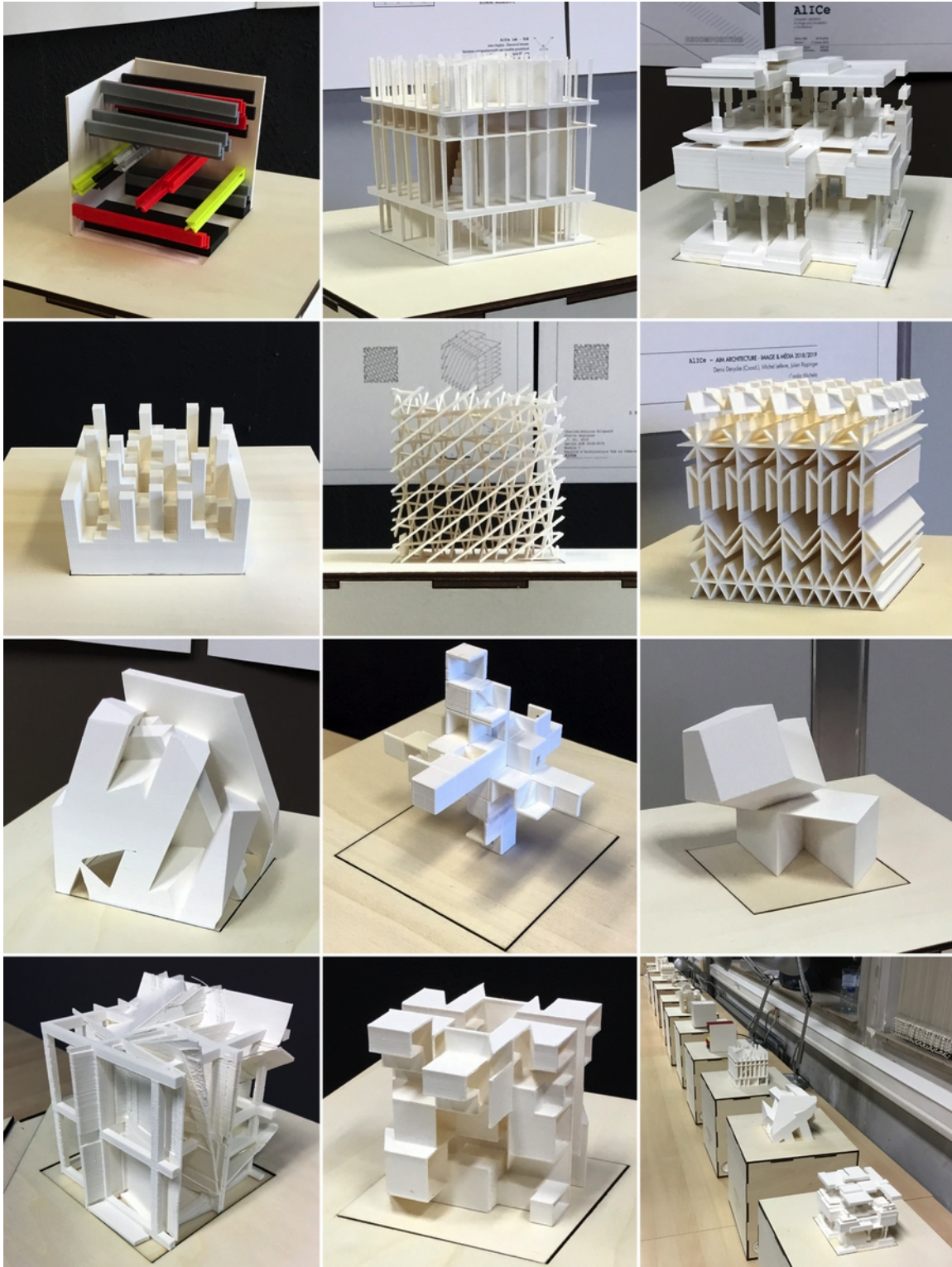
Teachers: Denis Derycke (coordinator), Michel Lefèvre, Julien Rippinger  
Invited lecturer: Uri Wegman

## 2019-2020 theme

Based on the analysis of an artwork, exploration of autonomous compositional systems contained in the space of a 10 centimeter cube. The scale of the cube has to be defined by each group of students, according to their project.

Selected artists : Joseph Albers, Anni Albers, Manfred Mohr, Sol Lewitt, Lygia Clark, Brian Eno, Johann Sebastian Bach, Steve Reich, Philip Glass, John Cage. Specific pieces will be presented during the first studio session.

## Examples of 2018-2019 works & pictures of working sessions in AIICe lab:



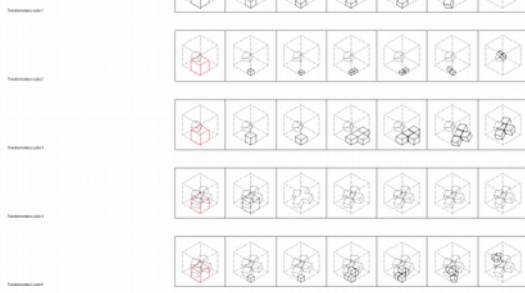
INTERPRETATION

INTERPRETATION DES PARAMETRES

Case  
Forme  
Couleur



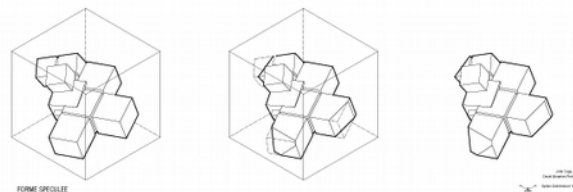
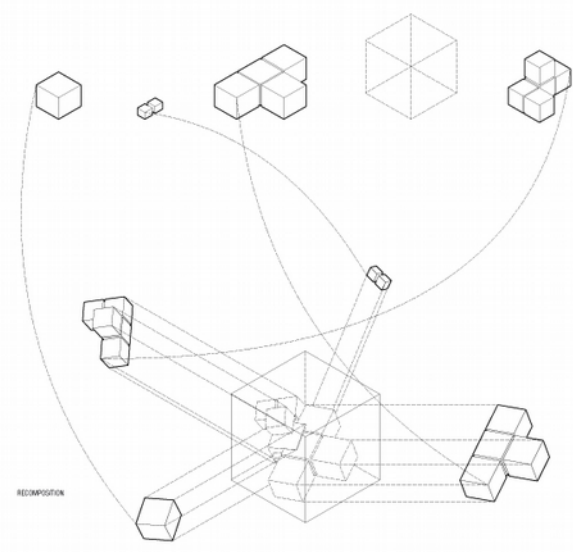
DEROULEMENT COMPOSITION



TABLEAUX TRANSFORMATIONS

	Taille Structure	Hauteur Structure	Nombre de lignes Structure	Essai de rotation Structure	Rotation Structure	Position Structure
Case 1	1	1	1	0	0	0
Case 2	1	1	1	1	0	0
Case 3	1	1	1	1	1	0
Case 4	1	1	1	1	1	1
Case 5	1	1	1	1	1	1

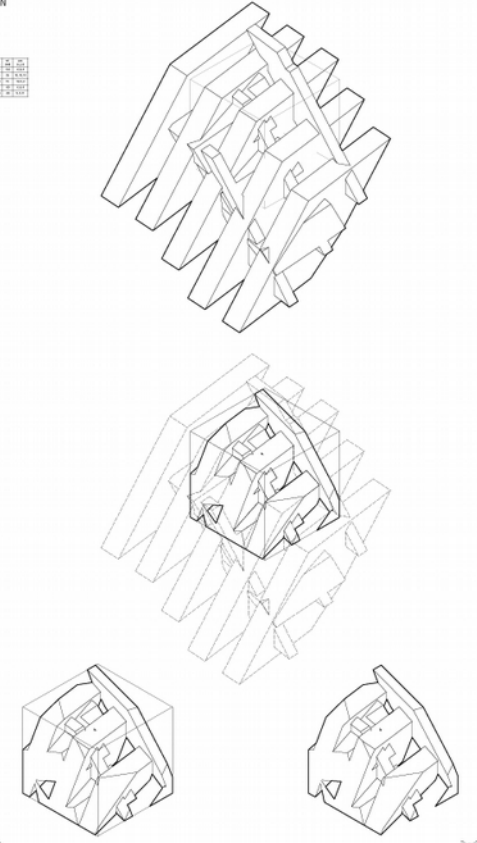
SPECULATION



CONCRETISATION

Case final

Case 1	1	1	1	0	0	0
Case 2	1	1	1	1	0	0
Case 3	1	1	1	1	1	0
Case 4	1	1	1	1	1	1
Case 5	1	1	1	1	1	1



CONFIGURATIONS POSSIBLES

