

Formal Analysis and Computer Process

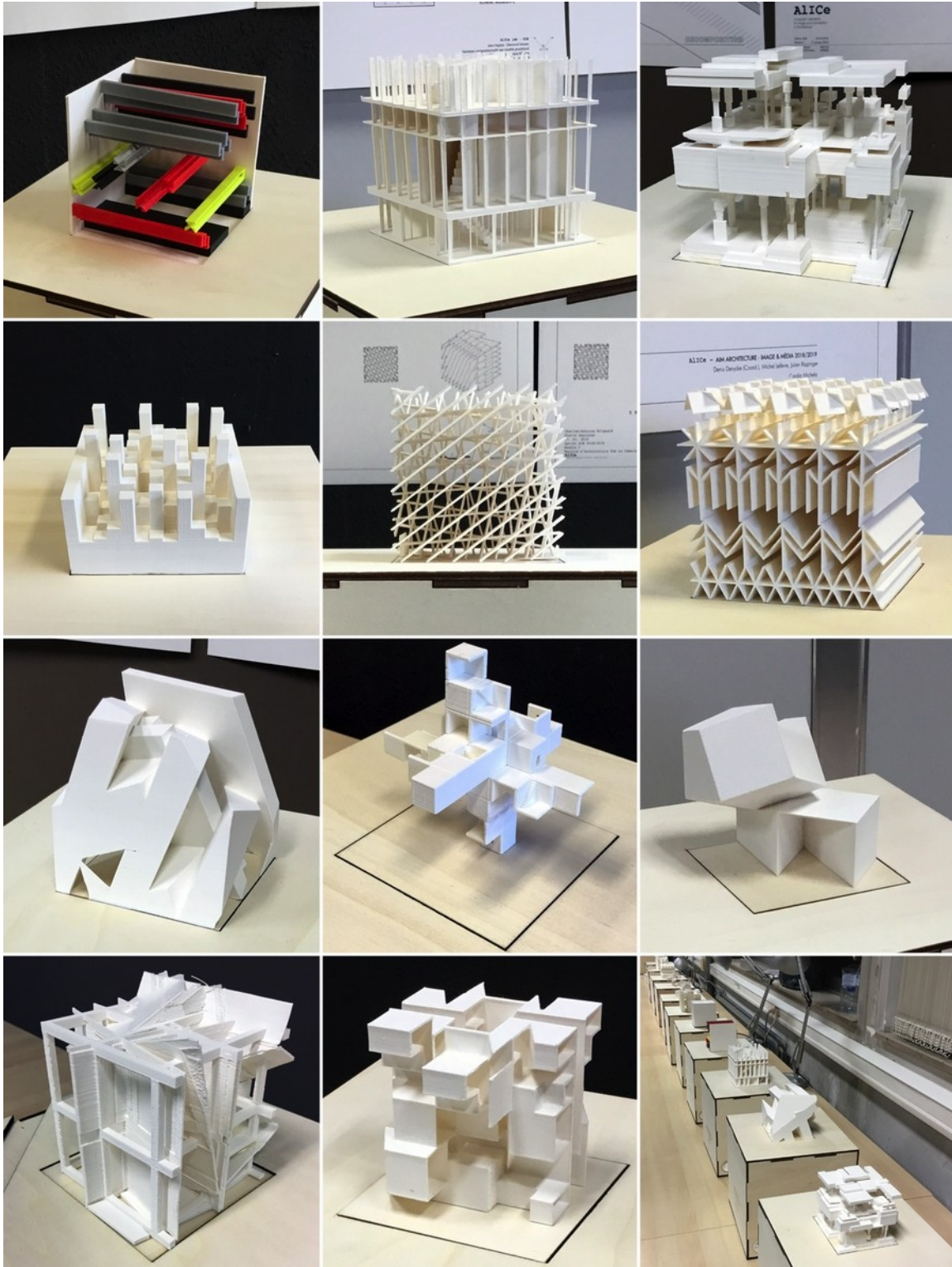
Teachers: Denis Derycke (coordinator), Michel Lefèvre, Julien Rippinger
Invited lecturer: Uri Wegman

2020-2021 theme

Based on the analysis of an artwork, exploration of autonomous compositional systems contained in the space of a 10 centimeter cube. The scale of the cube has to be defined by each group of students, according to their project.

Selected artists : Manfred Mohr, Goerg Nees, Iannis Xenakis, John Horton Conway.
Specific pieces will be presented during the first studio session.

Examples of 2018-2019 works & pictures of working sessions in AIICe lab:



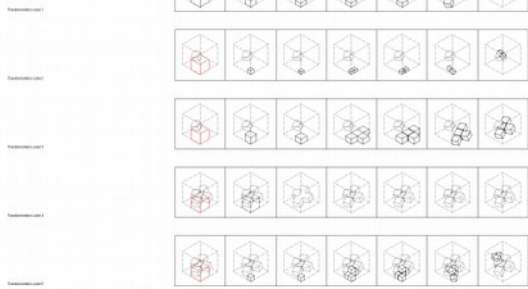
INTERPRETATION

INTERPRETATION DES PARAMETRES

Case
Form
Type



DEVELOPPEMENT COMPOSITEUR



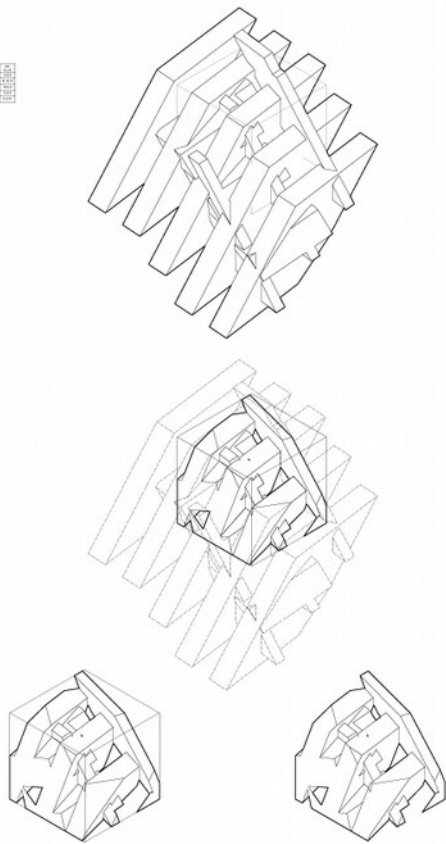
TABLEAUX DES TRANSFORMATIONS

	Taille variable	Hauteur variable	Nombre de lignes variable	Escalier variable	Rotation variable	Position variable
Case 1	1	1	1	0	0	0
Case 2	1	1	1	1	0	0
Case 3	1	1	1	1	1	0
Case 4	1	1	1	1	1	1
Case 5	1	1	1	1	1	1

CONCRETISATION

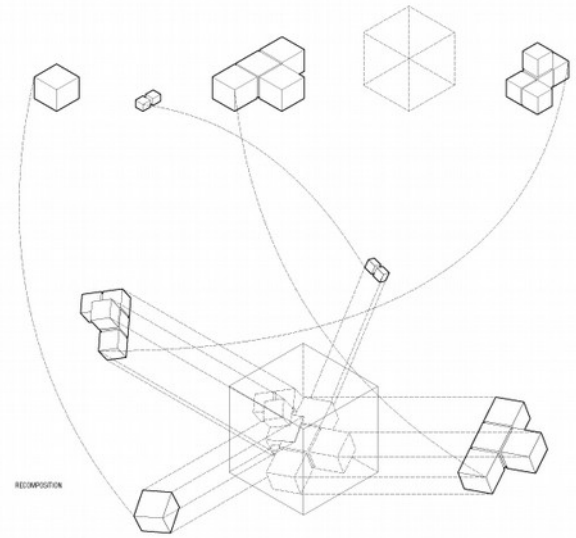
Case final

Case	Form	Type
1	1	1
2	1	1
3	1	1
4	1	1
5	1	1

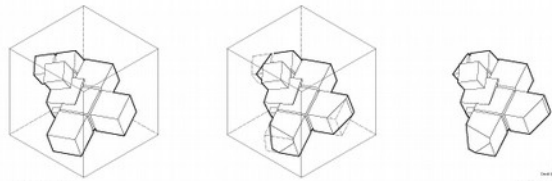


FORME FINALE

SPECULATION



RECOMPOSITION

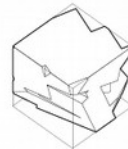


FORME SPECULEE

CONFIGURATIONS POSSIBLES

Case 1

Case	Form	Type
1	1	1
2	1	1
3	1	1
4	1	1
5	1	1



BLOIS DENSE

Case 2

Case	Form	Type
1	1	1
2	1	1
3	1	1
4	1	1
5	1	1



Case 3

Case	Form	Type
1	1	1
2	1	1
3	1	1
4	1	1
5	1	1



BLOIS COMPLEXES

Case 4

Case	Form	Type
1	1	1
2	1	1
3	1	1
4	1	1
5	1	1



Case 5

Case	Form	Type
1	1	1
2	1	1
3	1	1
4	1	1
5	1	1



BLOIS COMPLEXES

Case 6

Case	Form	Type
1	1	1
2	1	1
3	1	1
4	1	1
5	1	1



BLOIS COMPLEXES

